

TYCON GROUP PTY LTD

CAPABILITY STATEMENT





We are writing to you to offer our services on your project.
 We firmly believe we can be of real help in achieving the social outcomes on the project.

ABOUT US

At Tycon Group our Infrastructure work lays the foundation for how people live, work and play.

We work across various construction sectors including water infrastructure, transport infrastructure, rail, energy and resources, defence and mining.

We ensure that our long-term relationships with our partners and clients are built on and sustained by true collaboration and communication.

WHAT WE DO

Scope	Works typically include
Form	<ul style="list-style-type: none"> • Water retaining structures • Deep concrete shafts • Tunnel works and launch pads • Bridges and off structure barriers • Rail realignment works • Culverts and headwalls • Capping beams and crane rails • Retaining walls • Concrete slabs and pavements • Curved concrete walls
Reinforcement	<ul style="list-style-type: none"> • Conventional and suspended slabs • Ground works • Conventional and PT Bondeck slabs • Bridge reinforcement • Wing walls and headwalls
Pour	<ul style="list-style-type: none"> • Beams and columns • Stormwater junction pits • PERI formwork systems.

**WE ARE A
KNOWN AND
TRUSTED
PARTNER.
WE HAVE
UNDERTAKEN
WORKS WITH
WATPAC ON
THE DOD -
EXPLOSIVE
ORDINANCE
LOGISTICS
REFORM -
POINT WILSON**



We understand how to work as part of the broader team on major defense projects. We bring a positive attitude and a superior safety record to every project. Below is a snapshot of our relevant experience, including referee who can attest to our quality performance.

Point Wilson - EOLRP

This \$3.1M contract comprises the construction of site establishment and structural concrete works (FRP) at Point Wilson. Tycon Group supplying all supervision, labour, equipment, plant and materials necessary to undertake the works. The scope included foundation works, concrete hardstand works, building slab works and retaining walls.

- FRP of administration and other building slab foundations including pad footings, ground beams and slabs.
- FRP of concrete hardstand pavements (totaling over 12,000m²) and varying in thicknesses from 210mm to 450mm.
- FRP of RT Walls 3.9m tall, tapered ends.

Referee

Adrian Poloniato (WATPAC)

Project Manager

Ph: 0419 939 587

**WE ARE A
KNOWN AND
TRUSTED
PARTNER.
WE HAVE
UNDERTAKEN
WORKS
WITH CPBJH
JV ON THE
WESTGATE
TUNNEL
PROJECT.**



We understand how to work as part of the broader team on major defense projects. We bring a positive attitude and a superior safety record to every project. Below is a snapshot of our relevant experience, including referee who can attest to our quality performance.

Westgate Tunnel Project

This \$6M contract comprises the construction of site establishment civil works at the North Portal Site. Tycon Group supplying all supervision, labour, equipment, plant and materials necessary to undertake the works. The scope included subsurface works, roadworks and retaining walls.

- FRP of more than 20,000m² of thick concrete paving for the car park, lay-down areas and haul roads, loading bays and pedestrian walkways.
- Tunnel portal decline works including 1.2m thick base slabs and 12m high x 1m thick walls with corbels.
- Break-back of 174 piles, FRP of over 670 lm of capping beams for 500tn & 250tn gantry cranes including the crane rail and conveyor footings.
- Construction of High Voltage switchroom and other temporary switchrooms.
- Concrete works for dosing facility.
- Cast in-situ pits.

Referee

Rex Malbacias (John Holland)
Senior Project Engineer, Tunnels for West Gate Tunnel Project (North Site)
Ph: 0428 116 529

**WE ARE A
KNOWN AND
TRUSTED
PARTNER.
WE HAVE AN
EXCLUSIVE
CONCRETE
STRUCTURES WITH
JOHN HOLLAND
(UNDER THE
MELBOURNE WATER
DELIVERY PARTNER
FRAMEWORK) ON
THE O'SHANNASSY
RESERVOIR OUTLET
PIPE RENEWAL.**



As a Melbourne Water delivery partner we engage in collaborative tendering, projected estimating and pricing for future Melbourne Water projects. Also Setting and achieving KPI's including Indigenous participation.

We understand how to work as part of the broader team on major infrastructure projects. We bring a positive attitude and a superior safety record to every project. Below is a snapshot of our relevant experience, including referees who can attest to our quality performance

O'shannassy Reservoir Outlet Pipe Renewal

The Head Contract Works includes construction of a new outlet structure including outlet shaft, tunnel, decommissioning of existing assets, upgrade of existing access roads and various minor works, with the Head Contract Works expected to be completed in late 2020.

- Design formwork and falsework systems
- Outlet Shaft Base Slab and First Lift
- Inlet Pipe Headwall
- Thrust Block at the Launch Portal Area;
- Installation of 12 off precast units on top of the Outlet Shaft First Lift. The 12 units
- Design, supply, install, modify, maintain and certify safe access systems including scaffolding
- Procuring and maintaining a mobile batching plant.

Referees

Glenn Crisp John Holland-KBR Joint Venture
Regional Construction Manager
Ph: 0417 387 617

Kyle Nestor John Holland-KBR Joint Venture
Project Manager
Ph: 0417 032 157



TYCON GROUP PROJECT SNAPSHOT

Melbourne Metro Tunnel Project, Cross Yarra Partnership, Value \$1.8M

As a civil works subcontractor to John Holland, this package of work consisted the following scope of services:

- Installation of 420lm of capping beams for A'Beckett and Franklin St sites constructed in a live working environment in Melbourne CBD.
- Installation of large concrete whaling beams to stabilise the 70m deep concrete shafts.

Referee

Wesley Johnson (CYP)
Project Manager
for Metro Tunnel Project
Ph: 0439 729 581

Westgate Freeway Upgrade, Leighton Contractors, Value \$1.8M

This was a challenging and exciting project. Our scope included:

- FRP of twenty one sets of gantry foundations which doubled as road barriers and
- Construction of seven high impact concrete barriers - typically known in the industry as battleship road barriers.
- Works were conducted next to a live freeway with limited space to construct the battleships. Each barrier was approximately 30m long with intricate custom profiles. The team managed to deliver the scope without injury and all works adhered to VicRoads standards with a 100 year design life.

Referee

David Blamey (Leighton)
Project Manager for Westgate
Freeway Upgrade Project
Ph: 0416 167 301

Regional Rail Link, John Holland and Leighton Contractors, Value \$1.4M

Scope of works included structural works at Lloyd Street and Dudley Street Bridges.

More specifically, Tycon constructed a composite bridge deck comprising steel beams, cast in situ concrete deck (precast in our site yard) and placed during the night. This also included concrete box drains and service ducts.

We constructed 16 bridge decks in total that measured 18m long x 3m wide combining 4 spans in width and length when installed.

Referee

Rohan Deed (John Holland)
Senior Project Engineer for
Regional Rail Link Project
Ph: 0418 128 937



TYCON GROUP

RECENT PROJECTS

Explosive Ordnance Depot Cerberus Hastings, Victoria

The purpose of the \$57.5 million Explosive Ordnance Logistics Reform Program (EOLRP) is to deliver new purpose-built logistics infrastructure to increase the EO storage and handling capability of Joint Logistics Command to rectify existing network deficiencies. The facilities will deliver a consolidated EO network with defined importation, wholesale and retail sites to ensure the ongoing operational effectiveness of the Australian Defence Force (ADF).

Scope of work: Indirectly involved through contractor. EO depot (bunker) and admin buildings.

Client: Watpac



Murrumbeena to Malvern Flood Mitigation Murrumbeena, Victoria

Working in conjunction with John Holland on the \$20.4 million project in order to construct storm water pits. The new storm water drain will collect water from heavy rainfall that flows over the streets and paved surfaces, reducing the impact of flooding to properties in the area. The pits varied in height, ranging from 2.7m – 6m.

Scope of work: form and pour of concrete and blinding, use of scaffolding, assembly and installation of gatics over pit structures.

Client: Melbourne Water

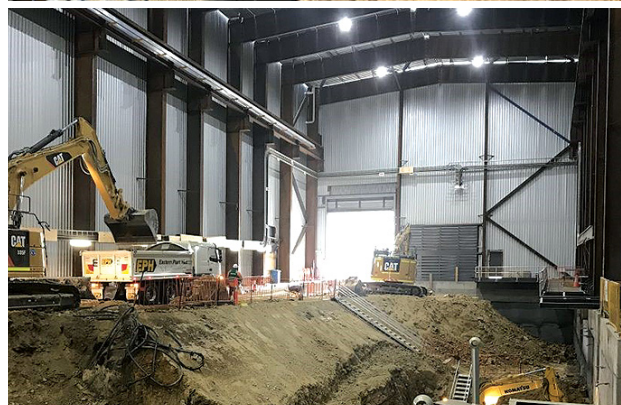


Metro Tunnel Melbourne, Victoria

The Metro Tunnel is a metropolitan rail infrastructure project worth \$9.7 billion, currently under construction in Melbourne, Australia. It includes the construction of twin 9-kilometre rail tunnels between South Kensington station and South Yarra with five new underground stations.

Scope of work: early works site establishment, concrete pile capping beams and concrete whaling beams in shaft 70m deep

Client: Metro



TYCON GROUP CAPABILITY

TYCON GROUP

RECENT PROJECTS

Westgate Tunnel – North & Pivot Zone Melbourne, Victoria

The \$6.7 billion West Gate Tunnel Project, originally known as the Western Distributor, is a 5 kilometre toll road currently under construction in Melbourne, Australia, to link the West Gate Freeway at Yarraville with the Port of Melbourne and CityLink at Docklands via twin tunnels beneath Yarraville.

Scope of work: early works site establishment, 23,000m² of paving hall-roads, capping beams for 500tn & 250tn gantry crane and over 1,000lm of conveyor footings

Client: Joint Venture – CPB & John Holland

Main Sewer Upgrade Carlton, Victoria

After more than 114 years of use, servicing over 15,000 households and businesses across Carlton, Brunswick and southern areas of Coburg, this sewer needed renewing. Sewage travelling through this main sewer ends up at the Western Treatment Plant in Werribee. The \$18.8 million project involving the main sewer upgrade in Carlton was successfully completed mid-2016.

Scope of work: construct 2 structural concrete shafts (26m deep) and 3 structural concrete shafts (15m deep); including headwalls for underground drilling/boring rig.

Client: Melbourne Water

Regional Rail Link Melbourne, Victoria

Working in conjunction with the Victorian Government in order to design, construct and install a new inner city, pre-fabricated railroad bridge. The \$400 million railroad bridge was comprised of 16 bridge decks (18m long x 3m wide), 4 spans in width and length.

Scope of work: bridges

Client: Government of Victoria

Explosive Ordnance Depot Two Fold Bay Eden, New South Wales

The EOLRP Works are being delivered in 3 Works Packages throughout Australia, with \$57.5 million invested in this package. The objective of the Explosive Ordnance Logistics Reform Program (EOLRP) Project is to enhance Defence capability by delivering improvements to Defence's Explosive Ordnance (EO) and non-explosive dangerous goods inventory management activities, including storage, processing, distribution and administration.

Scope of work: Indirectly involved through contractor. EO depots (bunkers) and admin building

Client: Watpac



TYCON GROUP CAPABILITY

**THE TYCON
SOCIAL
PHILOSOPHY IS
SIMPLE -
IF YOU HAVE AN
OPPORTUNITY TO
COLLABORATE
WITH OTHERS
TO BUILD
CAPABILITY,
YOU SHOULD.**



TYCON GROUP PTY LTD ABN 69 315 978 613
189 - 191 Balaclava Road, Caulfield VIC 3162
office@tycongroup.com +61 439 806 174
www.tycongroup.com

